



DAMIR VIŠIĆ, ing. pom. prom.

Stepinčeva 71, SPLIT

stalni sudski vještak za pomorski promet i procjenitelj vrijednosti plovila

**Naručitelj: Stečajna masa iza PERFORMANCE
YACHTING d.o.o. u stečaju
stečajni upravitelj Ante Gabelica
Domovinskog rata 52
21000 Split**

IZVJEŠTAJ VJEŠTAKA

PREDMET:

Procjena vrijednosti jahte na jedra More 55

MANTA RAY I



Split, 18. studenog 2024.

Sadržaj

1. NALAZ	2
1.1 OSNOVNI PODACI	2
1.2 ELEMENTI ZA IZRADU PROCJENE.....	3
1.3 ZATEČENO STANJE.....	3
1.4 POPIS OPREME.....	4
2. MIŠLJENJE.....	4
3. PROCJENA VRIJEDNOSTI.....	4
4. PRILOG slike.....	5
popis standardne opreme.....	8

NALAZ I MIŠLJENJE

1. Nalaz

Prema narudžbi naručitelja, g. Ante Gabelice, stečajnog upravitelja društva Stečajna masa iza Performance Yachting d.o.o. u stečaju iz Splita, pregled plovila obavljen je prema priloženim mi dokumentima te fotografijama i video zapisima koje je 03.07.2024. i 03.08.2024. napravio predstavnik osiguravatelja Allianz d.d., g. Neven Grubišić. Od vještačenja se traži procjena tržišne vrijednosti plovila.

1.1 OSNOVNI PODACI

Ime plovila:	MANTA RAY I
Zastava:	Hrvatska
Luka upisa:	Šibenik
NIB:	267819
Broj trupa:	---- (nije poznat) ----
Vlasnik:	PERFORMANCE YACHTING d.o.o. – u stečaju; Domovinskog rata 52, Split
Tip:	Jahta
Brodograditelj:	A-More Yachts d.o.o.
Model:	More 55
Godina proizvodnje:	2019.
Dužina:	16,00 m
Širina:	5,00 m
Gaz:	2,70 m
Bruto tonaža:	22,34
Područje plovidbe:	III
Materijal:	Stakloplastika
Pogonski stroj:	Yanmar 4JH110-KMH4A
Broj motora:	E54387
Snaga:	81 kW

Napomena:

navedeni podaci nisu mjereni, nego su uneseni iz brodskih dokumenata.

1.2 ELEMENTI ZA IZRADU PROCJENE

Kod izrade procjene vrijednosti ovog plovila uzeo sam u obzir sljedeće elemente:

- tip plovila
- opće stanje plovila
- nivo opremljenosti
- tehničku ispravnost plovila
- kvalitetu ugrađenih materijala i opreme
- kvalitetu izrade
- nominalne vrijednosti istog ili sličnih modela

1.3 ZATEČENO STANJE

Za potrebe ove procjene pristup plovilu mi nije bio omogućen pa je procjena rađena prema priloženom mi Izvratku iz upisnika brodova sa stanjem na dan 29. studenog 2023. te fotografijama i video materijalima koje je 03.07.2024. i 03.08.2024. snimio predstavnik osiguravatelja Allianz d.d., gospodin Neven Grubišić. Fotografije su snimane paralelno za dva plovila, EAGLE RAY i MANTA RAY I, istog modela i vlasnika i na njima su uglavnom snimljeni detalji te se ne može na svim snimkama jasno razaznati na koji se od ova dva plovila pojedina fotografija odnosi. Međutim, prema priloženom je jasno kako su oba plovila u gotovo jednakom stanju. Serijski broj trupa plovila u dokumentaciji nije naveden niti ga se na priloženoj fotografiji može jasno razaznati (slika 1). Ugrađeni motor je Yanmar 4JH110-KMH4A snage 81 kW. Serijski broj motora E54387 (slika 2) odgovara broju navedenom u dokumentima. Prema brojaču, motor je imao 1693,1 radni sat (slika 3). Po podacima u Izvratku iz upisnika brodova datum prve registracije bio je 16.03.2020., a kao navedena nabavna vrijednost plovila upisano je 3.967.540,78 HRK, što je približno 423.000,00 € + 25% PDV-a. Od 25.08.2020. na plovilu postoji evidentiran teret, a kao korisnik plovila navedena je charter tvrtka Black Pearl Charter d.o.o. iz Zagreba. Osnovna namjena plovila su gospodarske potrebe, a za plovilo u upisniku nije evidentiran nijedan tehnički pregled. Na palubi nisu vidljivi tragovi oštećenja ili ranijih bitnijih sanacija (slika 4). U kokpitu i opremi također nema vidljivih oštećenja ni tragova neke ranije bitnije sanacije (slika 5 i 6). Jarbol i oprema jarbola postavljeni su pravilno i uredni su (slika 7). Nikakvi tragovi oštećenja ili nekih ranijih sanacija nisu vidljivi ni na interijeru (slike 8 – 14).

Santine su čiste i na metalnom ojačanju i vijcima kobilice nema nikakvih deformacija ni tragova korozije (slika 15).

1.4 POPIS OPREME

Popis standardno opremljene jahte na jedra More 55 naveden je u prilogu.

2. Mišljenje

Nabavna vrijednost standardno opremljenog plovila bila je 423.000,00 €, što ukazuje da je predmetno plovilo bilo znatno bolje opremljeno od standardno opremljenog plovila istog modela, približno za 84.000,00 €. Prosječna vrijednosti plovila ovog tipa starog pet godina, ovisno o nivou opremljenosti, načinu korištenja, tehničkoj ispravnosti, kvaliteti izrade i općem stanju plovila i opreme, kreću se od 50 – 68% vrijednosti novog. S obzirom da se plovilo cijelo vrijeme bilo u charter floti, na što ukazuje i relativno veliki broj radnih sati, ali i prema prikazanim mi materijalima dosta dobro očuvano i u relativno dobrom stanju, procjenjujem da je njegova vrijednost 60% vrijednosti novog. Međutim, zbog realnog poskupljenja repromaterijala plovila u proizvodnji u međuvremenu se vrijednost ovakvih plovila uvećala za 15%.

3. Procjena vrijednosti

Uzimajući sve navedeno u obzir, procjenjujem da je vrijednost pregledane jahte na jedra More55 imena EAGLE RAY u neto vrijednosti, bez PDV-a, 291.870,00 €, odnosno s uračunatim PDV-om: **364.837,50 €**

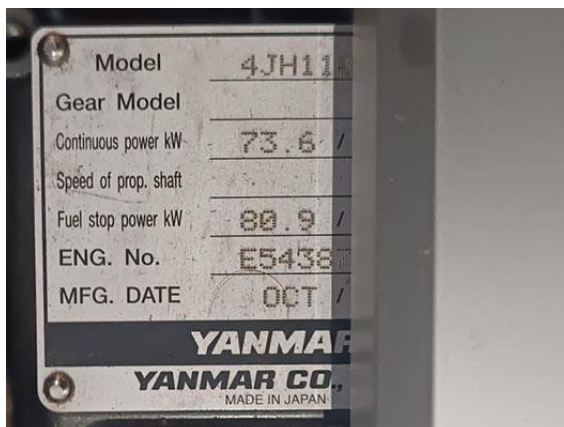
Stalni sudski vještak
Damir Višić, ing. pom. prometa



4. Prilog - slike



slika 1



slika 2



slika 3



slika 4



slika 5



slika 6



slika 7



slika 8



slika 9



slika 10



slika 11



slika 12



slika 13



slika 14



slika 15

- popis standardne opreme

More 55

standard specification

CONSTRUCTION**HULL&DECK**

VACUUM INFUSED EPOXY BASED VINYLESTER CORED GRP WHITE (ISOPHTHALIC) GELCOAT WITH DECORATIVE BANDS OPTIMAL STRENGTH/WEIGHT RATIO - ACHIEVED BY USING MULTIAXIAL AND UNIDIRECTIONAL E-GLASS FIBERS TRANSPARENT GEL COAT UNDER WATERLINE FOR VISUAL QUALITY CONTROL THERMAL AND SOUND INSULATED HULL AND DECK STAINLESS STEEL FRAME BELLOW SALOON FLOOR AS REINFORCEMENT IN WAY OF KEEL, TAKING ALL LOADS FROM KEEL STEPPED MAST TO STRESS AREAS (WHERE WINCHES AND MAJOR DECK FITTINGS ARE FIXED) REINFORCED WITH ALUMINUM OR OKOUME PLYWOOD HULL AND DECK ARE BONDED WITH STRUCTURAL GLUE AND ADDITIONALLY LAMINATED

DECK EQUIPMENT

TEAK ON COCKPIT SEATS STAINLESS STEEL BOW FITTING (WITH ANCHOR/CHAIN ROLLER) AND ATTACHMENT FOR ASYMMETRICAL SPINNAKER STAINLESS STEEL CHAINPLATES SELF-DRAINING ANCHOR/CHAIN LOCKER 12 STAINLESS STEEL STANCHION BASES RAIL GATES ON BOTH SIDES 2 OPENABLE PORTLIGHTS IN COCKPIT 12 PORTLIGHTS ON HULL 2 OPENABLE PORTLIGHTS ON SIDE COAVHROOF 6 SIZE 41 FLUSH HATCHES 1 SIZE 70 FLUSH HATCHES 3 SIZE 60 FLUSH HATCHES

COCKPIT

STORAGE LOCKER IN MID COCKPIT DRY STORAGE LOCKERS ON PS & SB SIDE OUTBOARD DRAINED TWO GAS BOTTLES (PS) COMPARTMENT FOLDABLE HELMSMAN FOOTSTOPS RUDDER STOCK HEAD FOR INSTALLING THE EMERGENCY TILLER TWO STEERING PEDESTALS SINGLE LEVER ENGINE CONTROL INSIDE RECESS ON COCKPIT SIDE SWIMMING PLATFORM WITH SWIMMING LADDER MANUALLY OPERATED DINGY 2,8M STORAGE BELLOW COCKPIT

MAST

PERFORMANCE SILVER ANODIZED ALUMINUM MAST FRACTIONAL TRIPLE SWEEP BACK (APPROX. 20°) SPREADERS IN ALUMINUM, DYFORM RIGGING, POLYESTER SHEETS, MAIN SAIL AND JIB HALYARD IN VECTRAN THE MAST STEP BOLTED TO THE STAINLESS STEEL KEEL FRAME

BOOM

SILVER ANODIZED ALUMINUM BOOM TWO (INTERNAL) REEF LINES FOR SINGLE LINE REEFING SYSTEM; ONE CLEW DOUTHHAUL DEVICE THE GAS PRESSURED BOOM VANG WITH AN OUTER PURCHASE BLOCK SYSTEM

STANDING RIGGING

DISCONTINUOUS STAINLESS STEEL DYFORM RIGGING INCLUDES: THRU DECK JIB FURLER HYDRAULIC BACKSTAY ADJUSTER/TENSIONER

RUNNING RIGGING

ALL HALYARDS, REEF LINES, TENSIONERS AND CONTROL LINES ARE HIDDEN BELLOW DECK AND LED TO THE COCKPIT (WINCHES)

THE STANDARD MAST INCLUDES:

- MAIN HALYARD
- SPI HALYARD
- JIB HALYARD
- BOOM TOPPING LIFT

SHEETS & ROPES:

- MAIN SHEET
- JIB SHEET
- TWO REEFING LINES
- DOUTHHAUL

FULL WIDTH MAIN SHEET TRAVELER HIDDEN BELLOW COCKPIT SOLE WITH POSSIBILITY OF EASY TRANSFORMING INTO MID BOOM SHEETING SYSTEM WITH POSSIBILITY OF BIG BIMINI COVERING WHOLE COCKPIT

STOPPERS (CLUTCHES)

- 10 X SPINLOCK

2X5 SHEAVE DECK ORGANIZERS

WINCHES

- 2 HARKEN PRIMARIES/GENOA SHEET 2-SPEED WINCHES, SIZE 65
- 2 HARKEN SECONDARY 2-SPEED WINCHES SIZE 55
- 2 HARKEN MAINSHEET 2-SPEED WINCHES SIZE 55

3 WINCH HANDLES WITH PVC HANDLE HOLDERS

SHIP EQUIPMENT**STEERING SYSTEM**

SINGLE RUDDER SYSTEM SEMI-BALANCED RUDDER WITH SELF ALIGNING ROLLER BEARINGS DOUBLE STEERING WHEEL BLACK GFC 1000MM EMERGENCY TILLER IN STAINLESS STEEL

KEEL

CAST IRON FIN WITH LEAD BULB, DRAFT 2,7M

MAGNETIC COMPASS NAVIGATION LIGHTS (BOW PORT, BOW STBD, STERN), RUNNING LIGHT, ANCHOR LIGHT, DECK LIGHT, ALL LED

ANCHORING & MOORING EQUIPMENT

ANCHOR (GALVANIZED), 25 KG ANCHOR CHAIN (GALVANIZED), 50 M X 10 MM STAINLESS STEEL ANCHOR ARM ELECTRIC ANCHOR WINDLASS 6 X MOORING CLEATS

INTERIOR FURNITURE, INVENTORY

STANDARD INTERIOR LAYOUT (A): 4 CABINS AND 4 HEAD UNITS LARGE SALOON WITH I SHAPED KITCHEN FOREFRONT INTERIOR JOINERY: MARINE GRADE WATER PROOF CORE, FACED WITH SELECTED NATURAL TEAK VENEER ALL BULKHEADS IN OKOUME PLYWOOD

FORE PEAK SPACE AS SAIL LOCKER

CUSHIONS ARE MADE IN HIGH QUALITY FOAM WITH SELECTED UPHOLSTERY

FLOORBOARDS ARE ALUCORE HONEYCOMB 15 MM THICK ALUMINUM FACED WITH ULTRAPAS IN WOOD COLOUR

FORWARD CABINS

FORWARD CABINS EASY CONVERTIBLE IN ONE BIG CABIN BY REMOVING SEGMENTAL BULKHEAD LOCKERS UNDER BERTH WARDROBES (PORT & STBD SIDE) WITH SHELVES AND HANGERS HANGING LOCKERS, SHOE LOCKERS

FORWARD HEAD UNITS

GRP WASH BASINS CORIAN WASH BASIN BOARDS SEPARATE SHOWER AREA HOT&COLD FRESH WATER MIXING TAPS ALSO WITH SHOWER UNIT SHOWER AUTOMATICALLY DRAINED BY ELECTRIC PUMP MANUAL MARINE TOILET FRONT OPENING DOUBLE LOCKER - PLACED ABOVE WASH BASIN - WITH MIRRORS MOUNTED ON FRONTS WASTE HOLDING TANK (APP. 55 L) FITTED WITH EXTERNAL NON CONTACT SENSORS AND TANK LEVEL WATCH, DECK OUTLET TEAK SHOWER GRATING

AFT CABIN (STBD & PORT)

DOUBLE BERTH WITH SHELVE AND LOCKERS ABOVE BED ALONG HULL SIDE LARGE HANGING LOCKER AND SHELVE ABOVE LOCKERS UNDER BERTH

AFT HEAD UNITS

GRP WASH BASIN CORIAN WASH BASIN BOARD HOT&COLD FRESH WATER MIXING TAPS SHOWER AUTOMATICALLY DIRECTLY DRAINED BY ELECTRIC PUMP MANUAL MARINE TOILET FRONT OPENING DOUBLE LOCKER (WITH MIRRORRED DOORS) PLACED ABOVE TOILET/SHOWER SEAT WASTE HOLDING TANK (APP. 65 L) FITTED WITH EXTERNAL NON CONTACT SENSORS AND TANK LEVEL WATCH, DECK OUTLET

More 55

standard specification

SALOON

LARGE U-SHAPED SETTEE TO HULL PS SIDE WITH DINING TABLE
UPPER CABINET SECTIONS WITH DOORS ALONG HULL SIDES
STORAGE LOCKERS UNDER SEATS AND BEHIND BACKRESTS

GALLEY

GALLEY WITH CORIAN WORK TOP
TWIN STAINLESS STEEL RECTANGULAR SINKS
MIXING TAP FOR PRESSURIZED HOT&COLD FRESH WATER
GAS STOVE (ON GIMBALS) WITH AN OVEN AND THREE BURNERS
TWO REFRIGERATORS
STORAGE LOCKERS - WITH SHELVES AND DOORS - ABOVE WORK
TOP ALONG HULL SIDE
STORAGE - WITH SHELVE AND DOOR - BELOW SINKS; WASTE
BASKET MOUNTED ON STORAGE DOOR

COMPANIONWAY

GAS SPRINGED OPENABLE STAIRS AS ENGINE COMPARTMENT
COVER

ENGINE COMPARTMENT

SOUND AND THERMAL INSULATED WITH NON FLAMMABLE FOAM
MATERIAL
EASY ACCESSIBLE THROUGH OPENING THE COMPANIONWAY STAIRS
AND/OR REMOVING THE SIDE HATCHES (PROVIDED IN BOTH AFT
CABINS)
PROVIDED WITH AUTOMATIC FIRE EXTINGUISHER
SPACE FOR GENERATOR INSIDE ENGINE COMPARTMENT

SANITARY SYSTEMS; DISCHARGE SYSTEMS

HOT&COLD PRESSURIZED FRESH WATER SYSTEM
VENTILATED FRESH WATER TANKS PLACED BELLOW BERTH IN THE
FORWARD CABIN FOR A TOTAL CAPACITY OF APP. 750L WITH
INSPECTION HOLES/COVERS
TANK LEVEL GAUGE(S) (PLACED ON ELECTRIC SWITCHBOARD)
MIXING FRESH WATER TAPS ARE FITTED IN BOTH HEAD UNITS AND
IN THE GALLEY
SHOWER WITH HOT&COLD FRESH WATER CAN BE FITTED IN
COCKPIT
HOT WATER TANK CAPACITY OF 30 L HEATED BY INTEGRATED
HEATER RUN WITH 220V SHORE POWER OR BY ENGINE COOLING
(FRESH) WATER
SHOWER BASINS ARE DRAINED DIRECT INTO THE SEA BY ELECTRIC
SHOWER PUMPS
ELECTRIC SHOWER PUMPS ARE OPERATED BY AUTOMATIC SWITCH
SHOWER IN COCKPIT (HOT AND COLD WATER)

MACHINERY MAIN COMPONENTS

YANMAR ENGINE 80HP WITH SAIL DRIVE SD 60
GEAR/GAS LEVER CONTROL IS PLACED IN COCKPIT
ALTERNATOR 80A
3 BLADE FIXED PROPELLER

SYSTEMS FOR MACHINERY MAIN COMPONENTS

2 FUEL OIL TANKS IN STAINLESS STEEL FOR A TOTAL CAPACITY OF
APP. 470 L
TANK INSPECTION HOLE/COVER WITH INCORPORATED FUEL FLOAT
TANK LEVEL GAUGE (PLACED ON ELECTRIC SWITCHBOARD)
FUEL OIL FILTER WITH WATER SEPARATOR

SHIP SYSTEMS**BILGE SYSTEMS**

ELECTRIC BILGE PUMP, OPERATED BY AUTOMATIC AND/OR MANUAL
SWITCH
ELECTRIC BILGE PUMP FOR AFT BILGE OPERATED BY AUTOMATIC
AND/OR MANUAL SWITCH
HAND OPERATED BILGE PUMP IS POSITIONED IN THE COCKPIT

ELECTRICAL SYSTEMS**24/12 V DC SYSTEM**

LED LIGHTS IN WHOLE INTERIOR
MAIN SWITCHBOARD INCLUDES LED INDICATORS AND
THERMOMAGNETIC SWITCHES
12 V SOCKETS
BATTERY CHARGER

1 x 12V 100 AH ENGINE START BATTERY
600 AH SERVICE BATTERIES BUNK
BATTERY SWITCH
SAFETY BATTERY PROTECTOR ANODE
EMERGENCY START CROSSOVER SYSTEM

230 V AC POWER SUPPLY

230 V AC DISTRIBUTION BOARD
MAIN CIRCUIT BREAKER
230 V AC SOCKETS
SHORE POWER DOCK SIDE CABLE